



February Homeschool Day

Inside:

- Sea Turtle Info sheets
- Sea Turtle Anatomy
- Build Turtles Activity
- Sea Turtle Maze
- Animal Observation





Hey friends!

My name is Pokey.

**I am a Kemp's Ridley
Sea Turtle.**

**You may not always see me swimming around
because I have a joint disease in my front
flippers.**



I hatched in Galveston, Texas on July 18, 1984 with my brother and sisters as a part of the Head Start Program.



The Head Start Program I hatched with was trying to save my species from extinction.



While my brothers and sisters found homes in the ocean, I stayed with my friends at the Head Start Program because of the joint disease I have. It makes swimming a little harder for me.



I have lived in different aquariums my whole life and I moved to Marineland in 2015!









I enjoy long naps, back scratches from my caretakers, and mackerel.



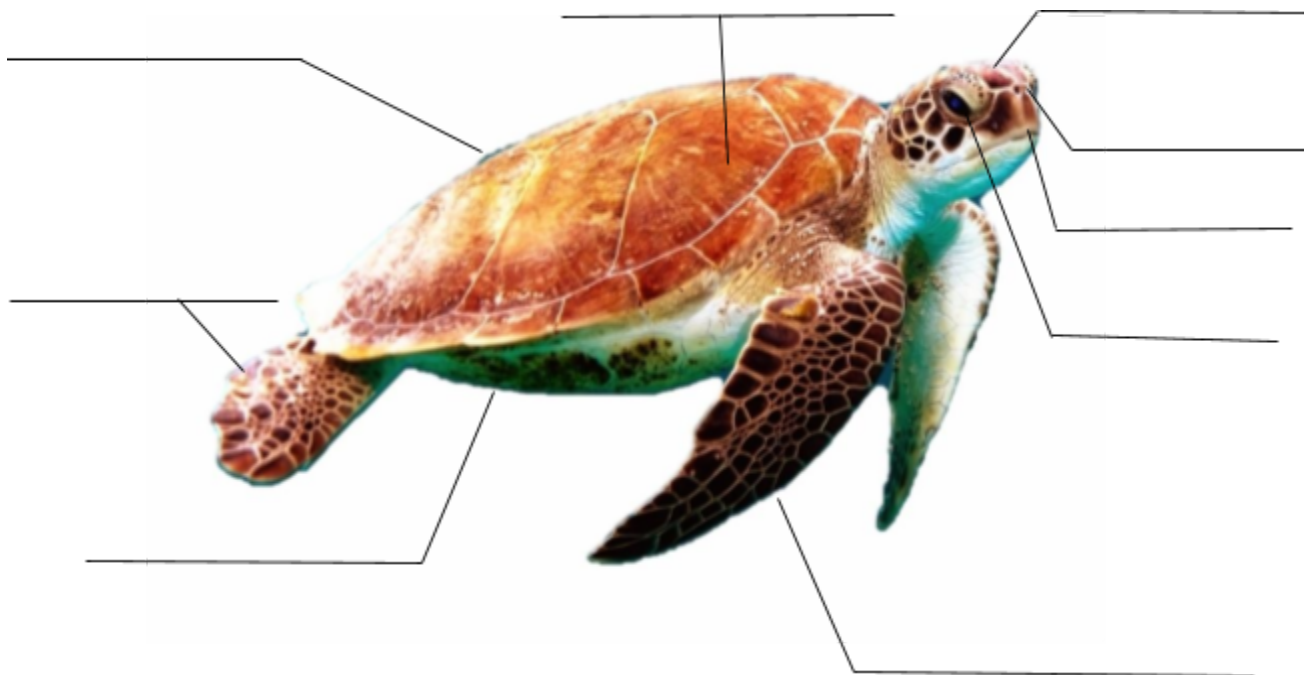
Hello everyone!
My name is Rocky.
**I am a Loggerhead
Sea Turtle.**

Want to know more about me?

-  I have lived at Marineland since 2014!
-  I am about 20 years old and weigh 250 pounds (113kg).
-  I used to live in the ocean, but I was struck by a boat in 2013 on the Gulf Coast of Florida.
-  After the boat strike, I was rescued and taken to Mote Marine Lab for rehabilitation.
-  I was in very critical condition and the amazing people at Mote Lab saved my life!
-  I sometimes have trouble finding food because of my partial blindness from the boat strike, but I love to eat and investigate new things in my environment!

My Sea Turtle Anatomy

Label the parts of the sea turtle below to match the felt sea turtle that you labeled as a class.



One cool fact I learned about sea turtles is.....

Build a Turtle

In this activity you will receive a bag with turtle body parts. Build a sea turtle and a tortoise! Draw your sea turtle and tortoise below and answer the questions.

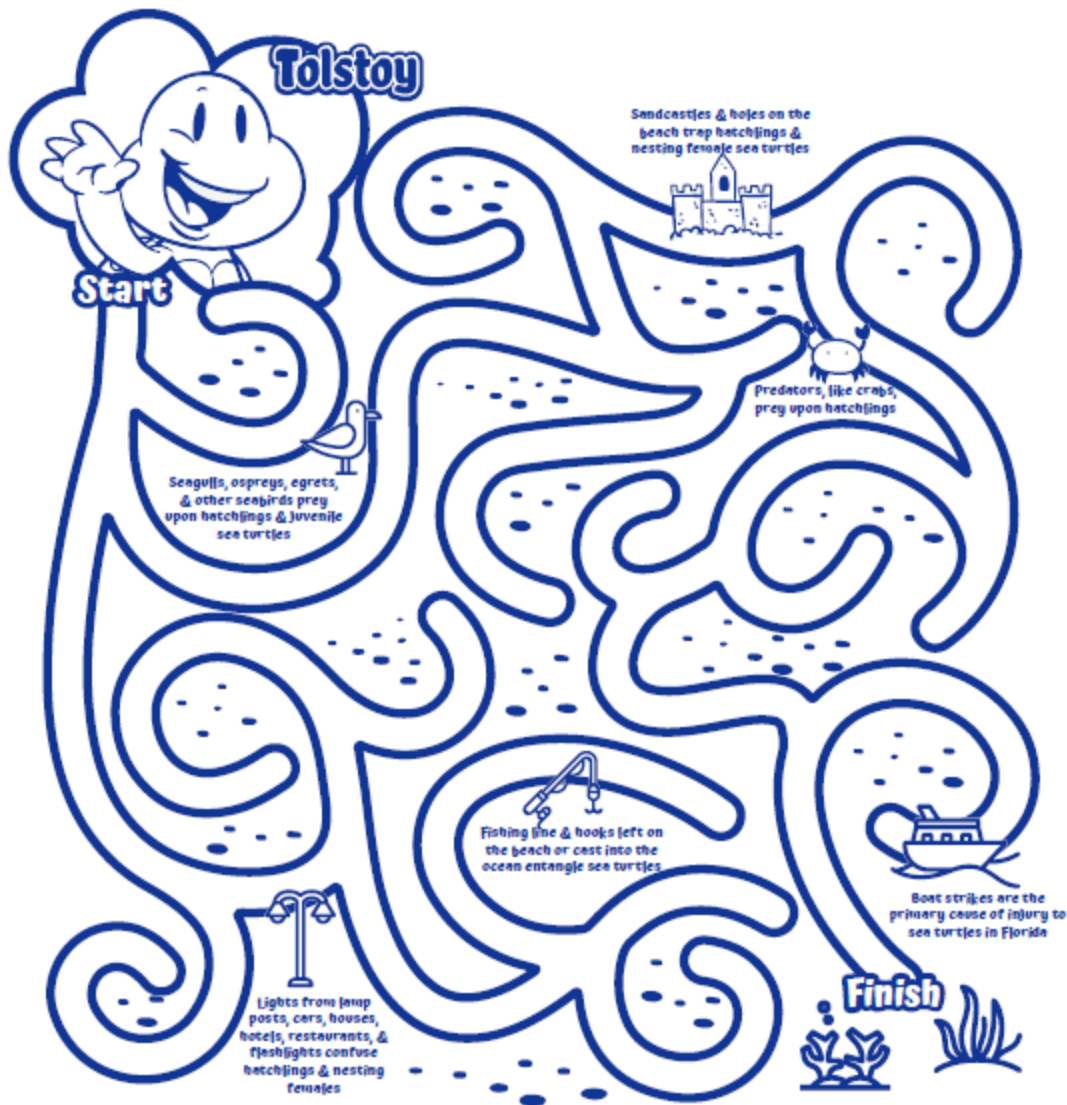
Sea Turtle	Tortoise

What are some of the differences between sea turtles and tortoises?

The Lone Survivor

Only 1 of every 1,000 sea turtle hatchlings survive to become adults. Will you be the one?

**Help Tolstoy make it from the nest to the ocean. Careful!
The beach is a dangerous place for a sea turtle!**



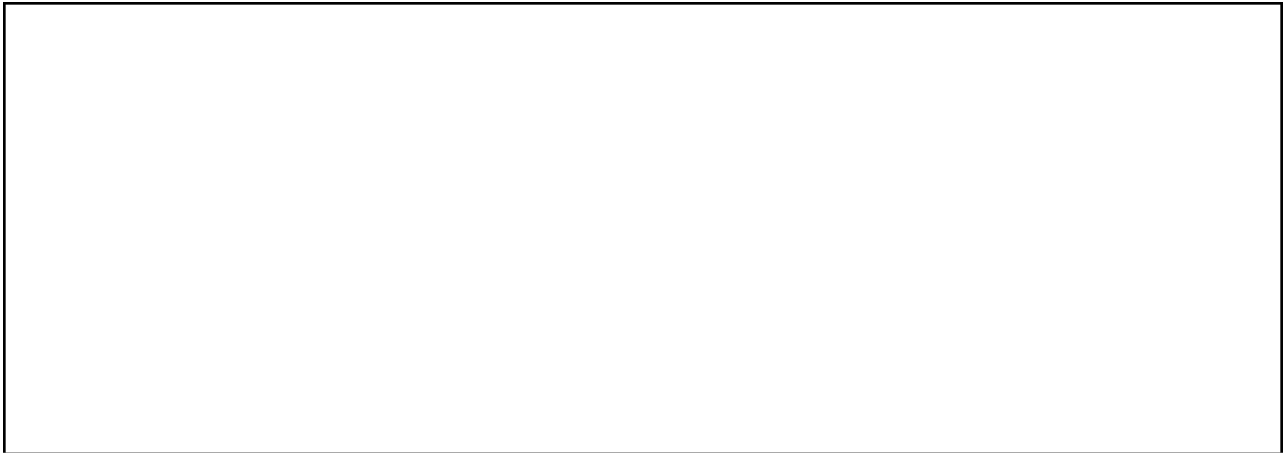
Animal Observation Project

Questions and Activities:

- Choose one animal at Marineland on which to do a physical and behavioral observation. You may pick any animal you'd like, but you must stick with that individual, so be sure you've identified a distinguishing characteristic about it that will help you keep it in view, even if it lives with a group of other animals that look just like it.

PHYSICAL OBSERVATION

- Draw your animal in the space below:



- Conclusions:
 - What distinguishing characteristic did you use to identify this animal?
 - What physical adaptations do you see on your animal that help it to survive in its environment? (Body shape? Coloration?)
 - What do you think these adaptations help the animal to do? (Avoid predators, Catch prey?)

BEHAVIORAL OBSERVATION



- Observe your animal for three minutes. Fill out the following behavioral observation chart. Put a check mark next to the behavior every time you see it. If you see any behaviors other than the ones listed, please add them in the blank spaces provided:

<u>BEHAVIOR SEEN</u>	<u>MINUTE 1</u>	<u>MINUTE 2</u>	<u>MINUTE 3</u>
Eating			
Chasing			
Hiding			
Playing			
Fighting			
Sleeping			

- Conclusions:

- What behavior did you see your animal do the most?

What behavior did you see your animal do the least?

What kind of conclusions can you make from your observations? (Keep in mind that your three minute observation does not represent a full day of the animal's life.)

Do you think their behavior is different depending on time of day?
Time of year?