



December Homeschool Day



Inside

- The Training Game
 - Education Station (Ambassador Park)
- How Do You Tell Them Apart?
 - Self-guided dolphin ID worksheet
- Dolphin Physiology: Blubber
 - Education Station (Whitney Park)
- Animal Observation (Pages 6 & 7)
 - Any Animal habitat

Our Animal ambassadors, Pingo and Romeo are going to help you learn all about dolphins and how they are trained!

THE TRAINING GAME

TRAINING=LEARNING

Think about your pets at home. We expect them not to potty in the house, chew on the furniture, or pull on the leash. But how do they know better?

As pet owners, it is our job to teach them and figure out how to communicate with them!



- How do you train a dolphin?
 - First, you have to find a way to communicate with them. To ask a dolphin a question, we use hand signals that are learned over time. To tell them 'good job' we use a **BRIDGE**! A bridge can be anything that the animal can hear, see, or touch.
- For example, we use a high-frequency whistle with dolphins to tell them **GOOD JOB**!

Head to the education station to play the roles of a 'trainer' and a 'dolphin' to learn and teach new behaviors!

What behavior do you want your dolphin to perform?



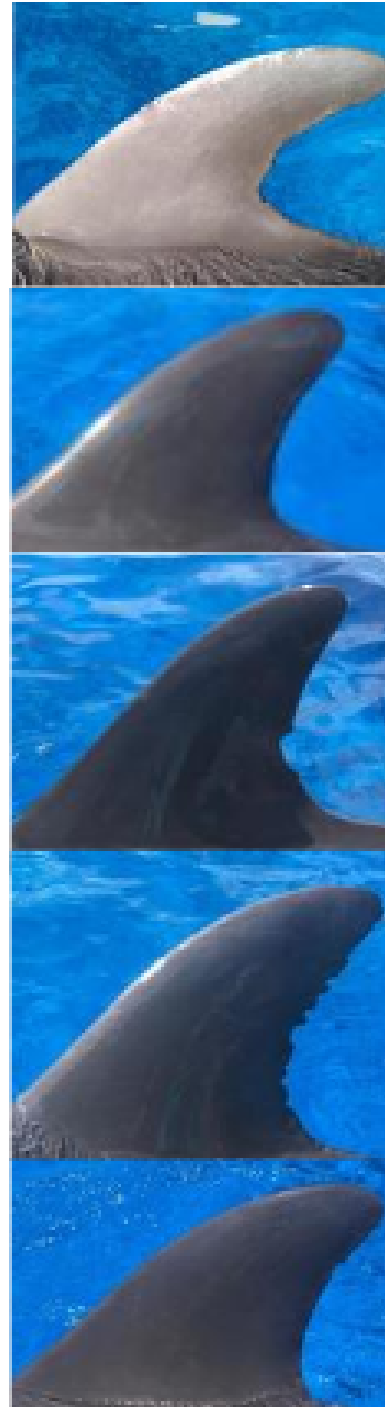
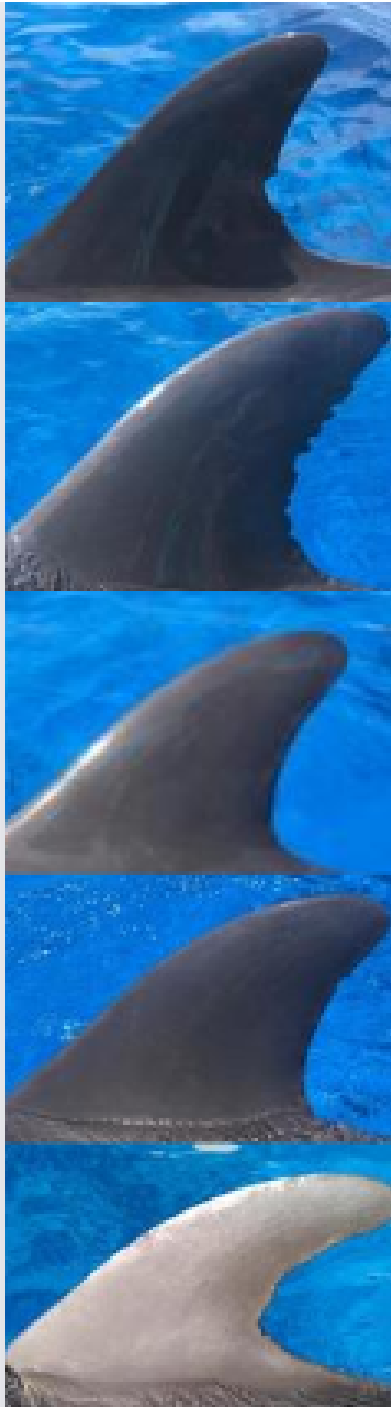
How do dolphins under human care receive

- Physical activity
- Mental stimulation
- Medical care
- Enrichment

The answer to all of these is **TRAINING**!

How do you tell them apart?

We use nicks and notches on a dolphin's dorsal fin to identify them! No two dorsal fins are alike! Draw a line from one side to the other to match the dorsal fins.

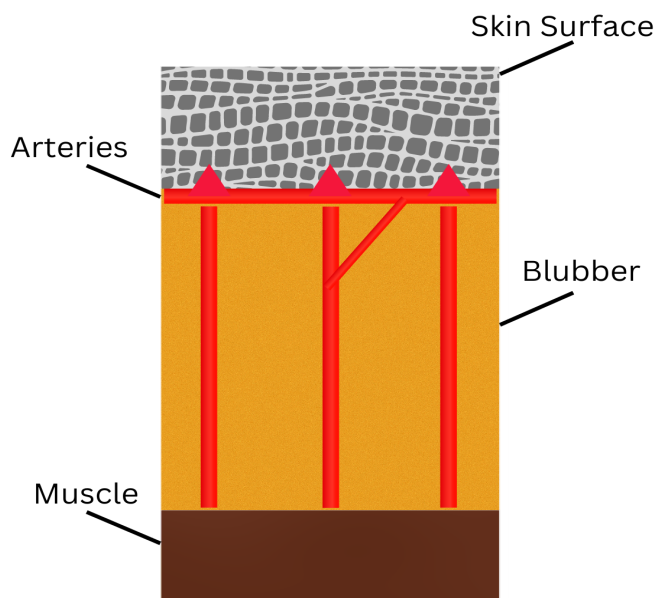


Why would researchers want to be able to identify individual dolphins in the ocean?

What Is Blubber?

Blubber is a thick layer of tissue under the skin of dolphins! Blubber provides insulation from cold ocean temperatures. Blubber is very unique as it is only found in cetaceans, (whales and dolphins) pinnipeds, (seals, sea lions, walruses) penguins, and sirenians (manatees and dugongs).

Head to the education station and see how a dolphin's blubber works!



Dolphin Adaptations

What are the 5 characteristics that make a dolphin a mammal?

- 1.
- 2.
- 3.
- 4.
- 5.



Marine Mammals such as Dolphins have _____ that helps to keep them warm.

What is Blubber?

How did your hand feel in the water?

How did your "Blubber" hand feel in the water?

What do you use for insulation when it is cold?



Animal Observation

Choose one animal at Marineland on which to do a physical and behavioral observation. You may pick any animal you'd like, but you must stick with that individual, so be sure you've identified a distinguishing characteristic about it that will help you keep it in view, even if it lives with a group of other animals that look just like it.

Animal: _____

Draw your animal here:

List 5 physical characteristics/adaptations (body shape, coloration, number of limbs, etc):

What do these adaptations help the animal do? (Avoid predators, catch prey, camouflage, etc)



Observe your animal's behavior for three minutes. Fill out the following behavioral observation chart. Put a tally mark next to the behavior every time you see it. If you see any behaviors other than the ones listed, please add them in the blank spaces provided:

Animal: _____

Behaviors Seen	Minute 1	Minute 2	Minute 3	Total Tallies
Eating				
Chasing				
Hiding				
Playing				
Breathing				
Sleeping				

What behavior did you see your animal do the most?

What kind of conclusions can you make from your observations? (Keep in mind that your three-minute observation does not represent a full day of the animal's life.)