

# **December Workbook (K-5th)**

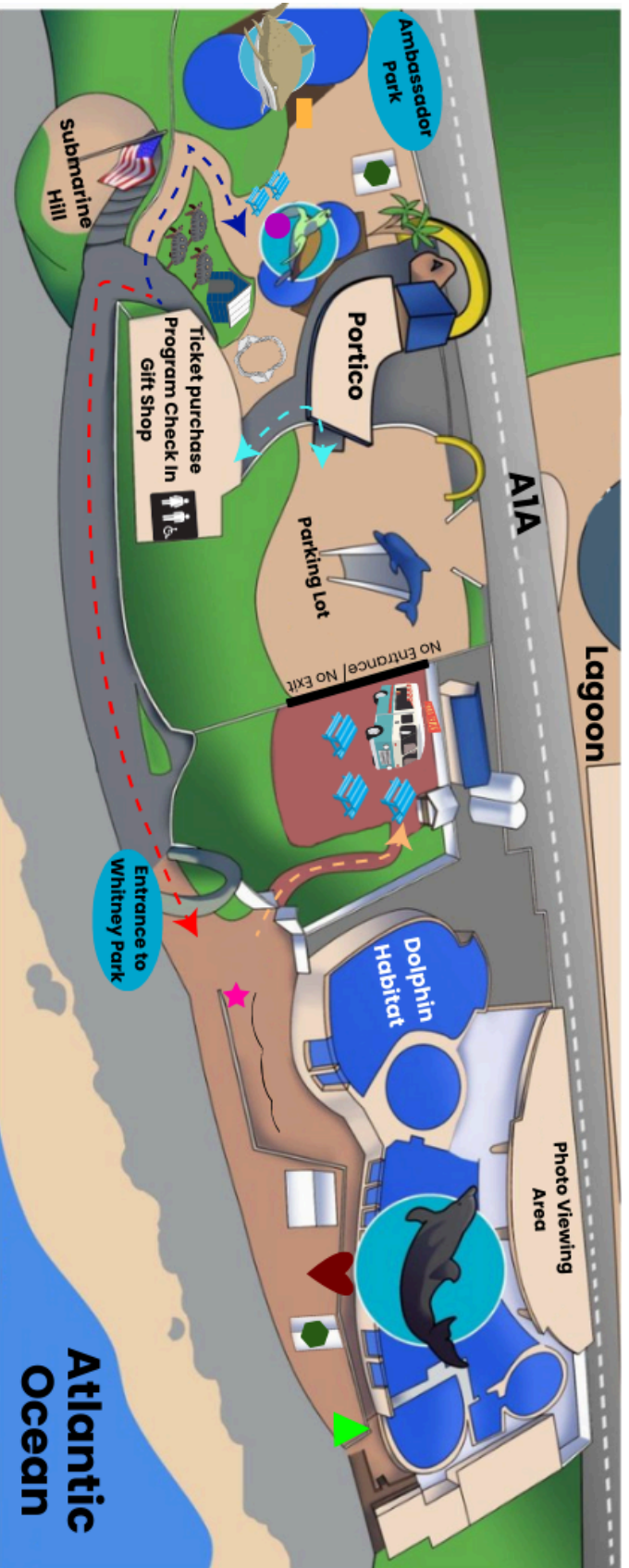
## **Homeschool Day Activities**

- **Homeschool Day Activity Schedule & Marineland Map**
  - **Page Number:** See Pages 2-3
- **Guided Lagoon Feeding: Fish Identification**
  - **Times:** 9:45AM, 11:45AM, & 1:15PM.
  - **Location:** Meet at Front Gate. This activity will include walking as a group to the Marineland Lagoon.
  - **Page Number:** See Page 4
- **Guided Educational Booth Activity: How To Read A Fish?**
  - **Description:** Learn the different adaptations seen across fish species.
  - **Location:** Education Station in Ambassador Park.
  - **Page Number:** See Pages 5-7
- **Guided Educational Booth Activity: Fishing For The Future**
  - **Description:** Learn about the impact of fishing practices while trying to be a sustainable fisher yourself!
  - **Location:** Education Station in Whitney Park
  - **Page Number:** See Page 8
- **Independent Educational Activity: Upcycled Ornaments**
  - **Description:** Learn how to make crafts from Recycled materials.  
**LEAVE 1 on our Tree and TAKE one home!**
  - **Location:** Holiday Tent Next to the Food Truck
  - **Page Number:** See Page 9

Please inquire about our Guided Fish Dissection Activity for students 10 and up who will meet at the Whitney Park Education Booth at 12:30 PM to then be taken to the classroom to complete the digestion. **\*This activity is an add-on, for an additional \$5 (plus tax per student) to be added on before 10:30 AM.**

**Make sure to see our General Admission Schedule for other talks and tours \*not exclusive\* to Homeschool Day.**

Homeschool Day ONLY Activites		
Guided Educational Booth Activities (Available as a walk up activity from 9:30 AM-2:00PM)		
How to Read a Fish?		Ambassador Park's Educational Booth
Fishing for the Furture		Whitney Park's Educational Booth
Independent Educational Booth Activity (Available as a walk up activity from 9:30 AM-2:00PM)		
Upcycled Ornaments		Holiday Tent by the Food Truck
Guided Scheduled Activites	Timeframe	Location
9:45 AM - 10:05 AM	Lagoon Feeding	Meet at Front Gate: We will be walking to the Marineland Lagoon
11:45 AM - 12:10 PM	Lagoon Feeding	
12:30 PM - 1:15 PM	Fish Dissection *45min lesson add on to be purchased no later then 10:30AM Onsite (Max of 25 Students)	Meet at Whitney Park's Educational Booth
1:15 PM - 1:40 PM	Lagoon Feeding	Meet at Front Gate: to Walk to the Lagoon
Please see our General Admission Schedule for other talks and tours not exclusive to Homeschool Day		



### Things to do in Ambassador Park:

- 10:30 AM: Shark Talk
- 1:00 PM: Turtle Talk
- Red Foot Tortoise Viewing
- Education Station Activities & Ambassador Program

### Things to do in Whitney Park:

- Dolphin Program Pick-Up
- Dolphin Talk & Program Viewing Area
- Sea to Shore Aquarium Tour Pick-Up Location
- Education Station Activities & Ambassador Program

Only Entrance & Exit

Flipperz Food Truck

Food Designated Area of the Facility

**No food allowed in Whitney Park for Dolphin Safety**

# **Lagoon Feed: Fish Identification**

**Match the correct picture to the correct fish name! See how many of these fish you can find in our lagoon!**



**Grey Snapper**



**Striped Mullet**



**Sheepshead**



**Black Drum**



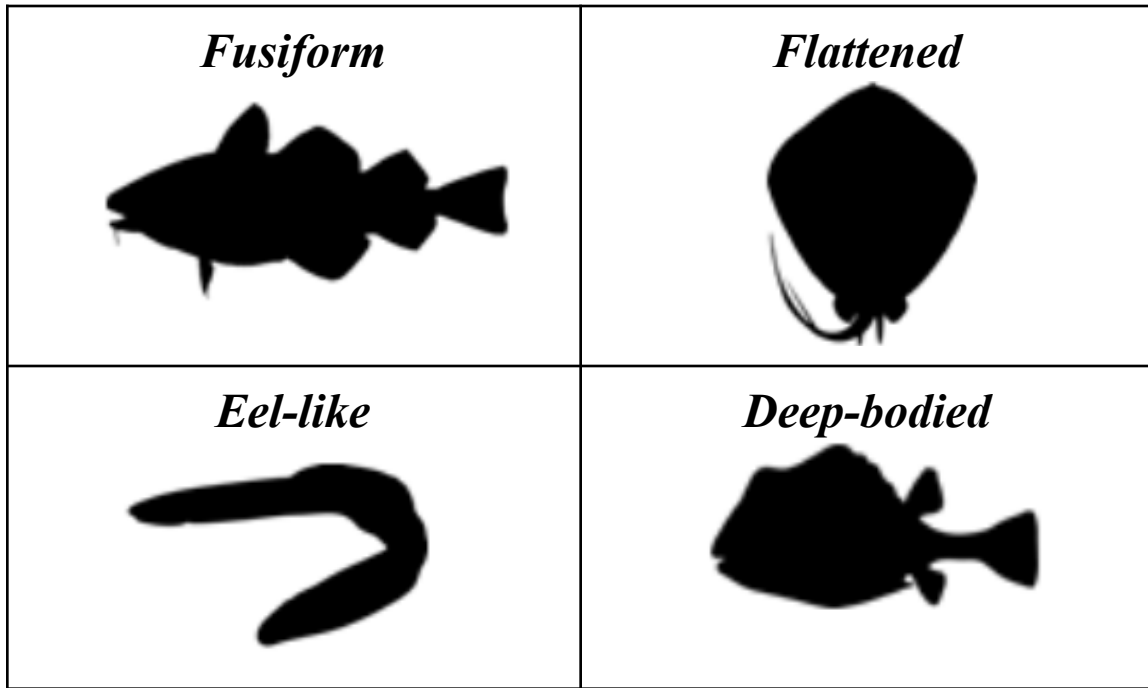
**Atlantic Spadefish**



# Guided Activity: How To Cold-Read A Fish

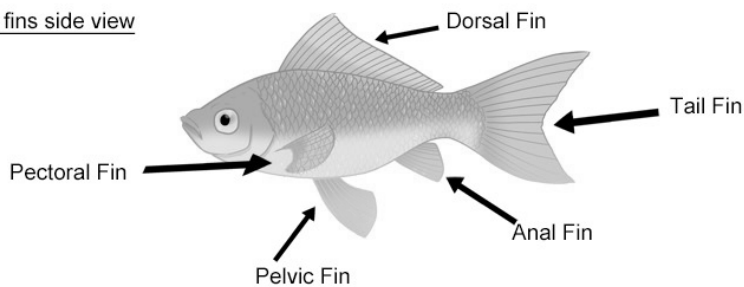
**Cold-Read Checklist:** Circle the photo or mark the box that matches the description of your fish!

**Body Shape:** *What does it look like? Circle the fish that looks like yours!*



**Fins:** *What kind of fins does your fish have? Circle all that apply!*

Fish fins side view



**Pectoral fin:**

Yes / No

**Pelvic fin:**

Yes / No

**Dorsal fin:**

Yes / No

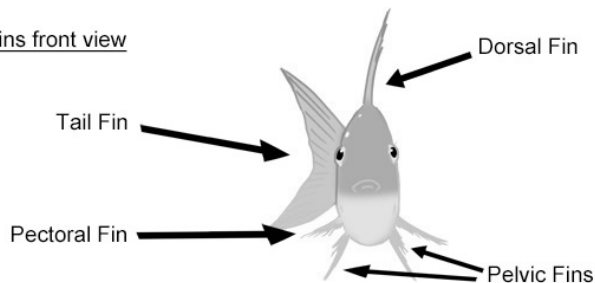
**Anal fin:**

Yes / No

**Tail fin:**

Yes / No

Fish fins front view



**Senses:** *What kind of senses does your fish have? Fill in the boxes below!*

<b>Eye size</b>	How big are the eyes?
<b>Nostrils</b>	Does your fish have nostrils?
<b>Mouth size</b>	What size is the mouth?

**Color:** *What color is your fish? Describe it below!*

<b>Base color</b>	What main color is your fish?
<b>Counter-shading</b>	Is your fish darker on top and lighter on the bottom?

**Fish name (if known):**

Body shape:		Mouth:	
Fin notes:			
Eyes:	Nostrils:	Other:	
Color notes:			

Based on your “read,” can you answer these questions?

Where does this fish live?

Is it fast or slow?

What does it eat?


# **Guided Activity: Fishing for the Future**

Sustainable fishing helps ensure there will be populations of ocean and freshwater wildlife in the future. Demand for seafood and advances in technology have led to fishing practices that are depleting populations around the world. Fishers remove more than 170 billion pounds of wildlife from the sea each year. Scientists fear that continuing to fish at this rate may soon result in a collapse of the world's fisheries.

Record your group's catch and the amount of fish left in the ocean after each season

<b>Season</b>	<b>Catch</b>	<b>Fish Left in the Ocean</b>
<b>1</b>		
<b>2</b>		

**Briefly describe the health of your fishery**

---

---

<b>Season</b>	<b>Catch</b>	<b>Fish Left in the Ocean</b>
<b>3</b>		
<b>4</b>		

**Briefly describe the health of your fishery now**

---

---



# Independent Activity: Upcycled Ornaments

Head Down to the Table in the Holiday Tent to create your ornaments.  
Please Create one to take with you and one to hang on our tree! See the  
Instructions on the table!

**Brainstorm what you think upcycling means:**

**Circle which one of the 4 R's you think upcycling falls under.**

**Reduce**

**Reuse**

**Recycle**

**Refuse**

**Why is upcycling important?**

**Circle items that you could upcycle:**

**Waterbottles**

**Soda Bottle**

**Cans**

**T-shirts**

**Candle Jars**

**Furniture**

**Paper**

**Cardboard**

**Crayons**